

**COMPEL**[®]

CONNETTORI COASSIALI N COAXIAL CONNECTORS

COMPEL RESERVES THE RIGHT TO MODIFY ITS SPECIFICATIONS WITHOUT PRIOR MODIFICATION AND DISTRIBUTION.

Connettore maschio dritto per cavo flessibile
 Interfaccia connettore : secondo CECC 22210
 Contatto interno libero
 Impedenza 50Ω
 R.O.S ≤ 1,05 sino a 1 GHz
 ≤ 1,09 sino a 5 GHz
 ≤ 1,15 sino a 11 GHz

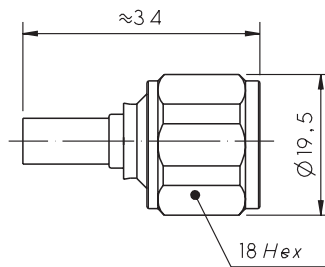
Materiali e finiture

- Corpo : ottone lega ternaria
- Contatto interno : ottone dorato
- Isolante : PTFE
- Ghiera : ottone nichelato
- Guarnizione : gomma siliconica
- Tubetto di crimpatura : rame ricotto stagnato

Straight plug connector for flexible cable
Connector interface: according to CECC 22210
Non-captured inner contact
Impedance 50Ω
V.S.W.R ≤ 1,05 up to 1 GHz
 ≤ 1,09 up to 5 GHz
 ≤ 1,15 up to 11 GHz

Materials and finishing

- Body : brass - ternary alloy plated
- Inner contact : brass - gold plated
- Insulator : PTFE
- Coupling nut : brass-nickel plated
- Gasket : silicone rubber
- Crimping ferrule : soft copper-tin plated

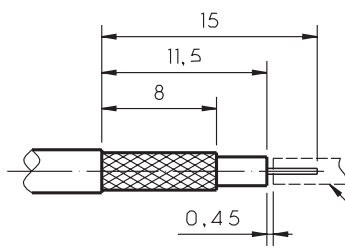


Part nr.	Cavo/Cable (50Ω)	Ø ext.
350.055.103.T2	RG 142 B/U	4,95 ±0,127
	RG 223 /U	5,38 ±0,1
350.055.104.T2	RG 58 C/U	4,95 ±0,1

LE CARATTERISTICHE ELENATE POSSONO ESSERE SOGGETTE A MODIFICHE SENZA ALCUN OBBLIGO DI PREAVVISO E DISTRIBUZIONE.

SISTEMA DI ATTACCO AL CAVO

Contatto interno : a saldare
 Contatto esterno : a crimpare con esagono 5,41 e lunghezza di crimpatura 10


CABLE ATTACHMENT

Inner contact : soldering
Outer contact : crimping - die closure dimension HEX 5.41 and length of crimping 10

Contatto interno
Inner contact

DC.055.103-T2

ED.	DATA/DATE	FIRMA/SIGN	ED.	DATA/DATE	FIRMA/SIGN	ED.	DATA/DATE	FIRMA/SIGN
01	14.04.00	Mm Ng	04	16.05.01	Eb Ng			
02	20.06.00	Gb Ng						
03	08.09.00	Mm Ng						