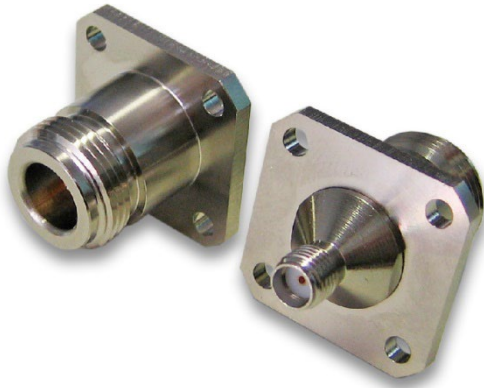


DATASHEET



| ELECTRICAL SPECIFICATIONS: | | |
|----------------------------|-------------|----------------|
| Impedance | 50 Ω | |
| Frequency range | dc – 11 GHz | |
| VSWR | ≤ 1.3 | |
| Voltage rating | 1000 Vrms | |
| Insulation resistance | 5000 MOhms | |
| Mating | 500 | |
| MATERIAL SPECIFICATIONS: | | |
| | Materials | Finishes |
| Body | Brass | Nickel plating |
| Center contact | BeCu | Gold flash |
| Insulator | PTFE | - |



Unit: mm (inch)

